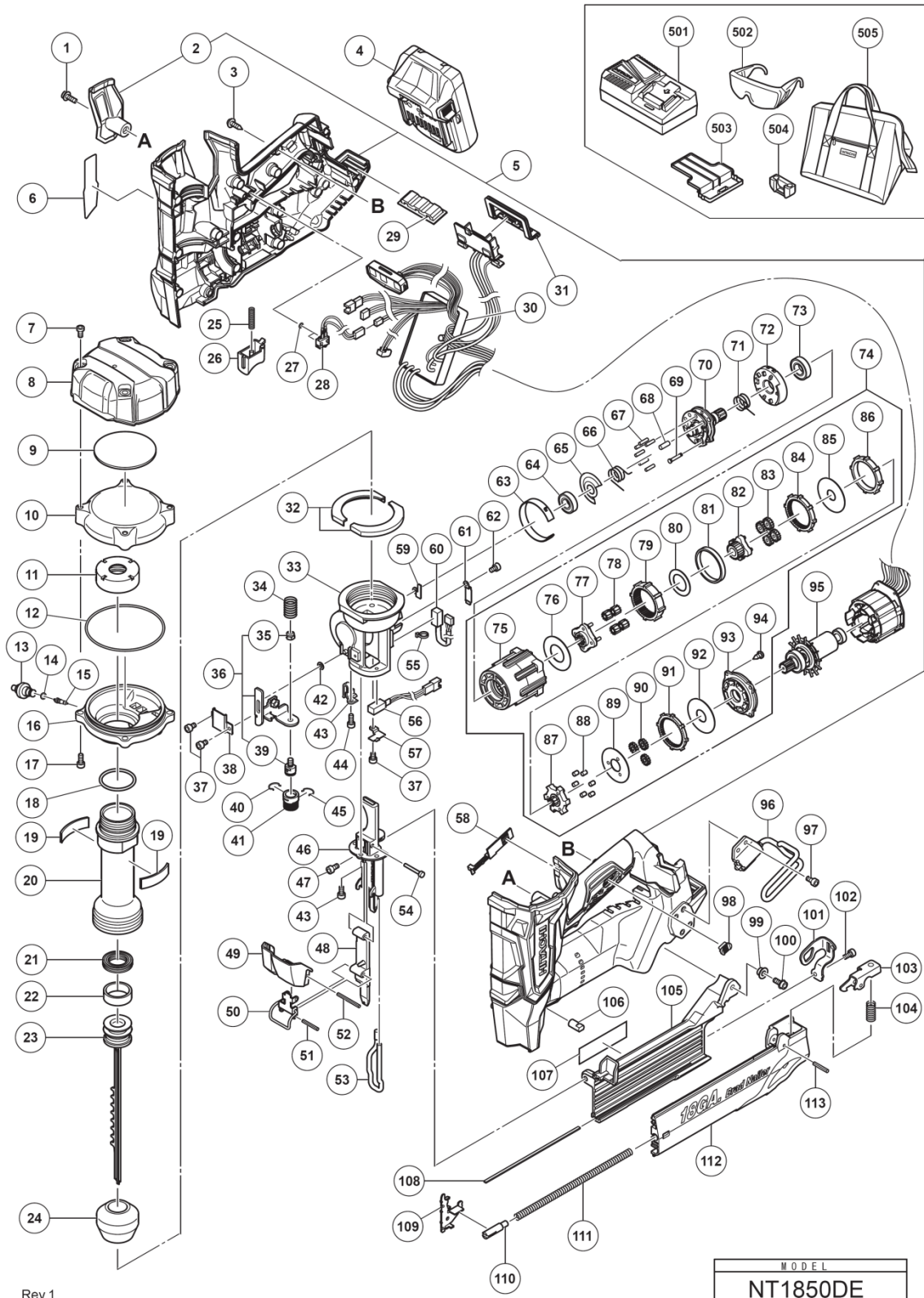


ELECTRIC TOOL PARTS LIST

■ CORDLESS FINISH NAILER
Model NT 1850DE

2017 • 05 • 03
(E1b)



PARTS

NT1850DM

ITEM NO.	CODE NO.	DESCRIPTION	NO. USED	REMARKS
1	880219	HEX. SOCKET HD. BOLT (W/FLANGE) M5X16	1	
2		HOUSING (C)	1	
3	301653	TAPPING SCREW (W/FLANGE) D4X20 (BLACK)	14	
4	339782	BATTERY BSL 1830C (USA.CAN)	1	INCLUD.503
5	371009	HOUSING ASS'Y	1	INCLUD.2
6		NAME PLATE	1	
7	371015	HEX. SOCKET BOLT M5	4	
8	371014	TOP COVER	1	
9	371012	RUBBER CUSHION (C)	1	
10	371035	CHAMBER COVER	1	
11	371040	SPECIAL NUT M36	1	
12	371037	O-RING (I.D 79.5)	1	
13	371039	CHARGE CAP	1	
14	872822	O-RING (S-5)	1	
15	371038	VALVE CORE	1	
16	371036	CHAMBER BASE	1	
17	949658	HEX. SOCKET HD. BOLT M5X18 (10 PCS.)	4	
18	371042	O-RING (I.D 32.99)	1	
19	371011	RUBBER CUSHION (B)	2	
20	371041	CYLINDER	1	
21	371046	X-RING	1	
22	371047	SLIDE RING	1	
23	371043	PISTON	1	
24	371048	PISTON BUMPER	1	
25	332000	SPRING (T)	1	
26	371021	TRIGGER	1	
27	371020	O-RING (I.D 2.5)	2	
28	371019	SWITCH CABLE (A)	1	
29	332668	RUBBER CUSHION	1	
30	370930	WIRING	1	
31	370728	TERMINAL RUBBER (A)	1	
32	371010	RUBBER CUSHION (A)	2	
33	371049	NOSE	1	
34	371066	SPRING	1	
35	877371	NYLON NUT M5	1	
36	371063	PUSHING LEVER ARM	1	INCLUD.35.39
37	325077	SEAL LOCK HEX. SOCKET HD. BOLT M3X6	3	
38	371058	PUSHING LEVER ARM HOLDER	1	
39	371065	PUSHING LEVER PIECE	1	
40	881765	RATCHET SPRING	1	
41	887358	ADJUSTER	1	
42	371062	WASHER D4	1	
43	371059	PUSHING LEVER ARM HOLDER (C)	1	
44	886311	SEAL LOCK HEX. SOCKET HD. BOLT M4X12	3	
45	886331	RATCHET SPRING	1	
46	371055	BLADE GUIDE	1	
47	880413	NYLOCK HEX. SOCKET HD. BOLT M4X10	1	
48	371068	GUIDE PLATE	1	
49	371078	LOCK LEVER COVER	1	
50	371074	LOCK LEVER	1	
51	371077	ROLL PIN D3X22	1	
52	371080	ROLL PIN D3X32	1	
53	371081	PUSHING LEVER (A)	1	
54	371071	GUIDE PIN	1	
55	6696839	WIRE BAND	1	
56	371022	SENSOR (B)	1	
57	371052	SENSOR HOLDER (A)	1	
58	331790	LEVER (C)	1	
59	371053	SENSOR HOLDER (A)	1	
60	371023	SENSOR (C)	1	

Parts

NT1850DM

ITEM NO.	CODE NO.	DESCRIPTION	NO. USED	REMARKS
61	371054	SENSOR HOLDER (B)	1	
62	325241	SEAL LOCK HEX. SOCKET HD. BOLT M3X8	1	
63	371051	SHIELD RING	1	
64	371033	BALL BEARING	1	
65	371032	WASHER (A)	1	
66	371027	WHEEL SPRING (A)	1	
67	371030	NEEDLE ROLLER D3	6	
68	371031	NEEDLE ROLLER D4.5	1	
69	371029	PIN (A)	1	
70	371026	PIN WHEEL	1	
71	371028	WHEEL SPRING (B)	1	
72	371034	POSITION DETECTOR	1	
73	6901VV	BALL BEARING 6901VV	1	
74	371025	GEAR BOX ASS'Y	1	INCLUD.75-94
75		GEAR CASE	1	
76		WASHER (E)	1	
77		CARRIER	1	
78		PLANET GEAR (C) SET (4 PCS.)	4	
79		PING GEAR (C)	1	
80		WASHER (D)	1	
81		GEAR SPACER	1	
82		PINION (C)	1	
83		PLANET GEAR (B) SET (4 PCS.)	4	
84		RING GEAR (B)	1	
85		WASHER (C)	1	
86		LOCK RING	1	
87		PINION (B)	1	
88		NEEDLE ROLLER (A) SET (6 PCS.)	6	
89		WASHER (B)	1	
90		PLANET GEAR (A) SET (3 PCS.)	3	
91		RING GEAR (A)	1	
92		WASHER (A)	1	
93		MOTOR SPACER	1	
94		SCREW SET D3X8 (4 PCS.)	4	
95	361054	ROTOR	1	
96	371214	HOOK	1	
97	331109	LOW HEAD HEX. SOCKET BOLT M4X8	4	
98	326276	LEVER (A)	1	
99	371086	DISTANCE PIECE M5	1	
100	996399	HEX. SOCKET HD. BOLT (W/FLANGE) M5X12	1	
101	371095	PLATE	1	
102	880413	NYLOCK HEX. SOCKET HD. BOLT M4X10	1	
103	885894	STOP LEVER	1	
104	885895	SPRING	1	
105	371088	MAGAZINE (A)	1	
106	371013	CAP SCREW	1	
107	371107	CAUTION LABEL	1	
108	885898	NAIL PLATE	1	
109	887995	NAIL FEEDER	1	
110	885899	FEEDER PIECE	1	
111	885900	FEED SPRING	1	
112	886849	MAGAZINE COVER	1	
113	949685	ROLL PIN D3X20 (10 PCS.)	1	

