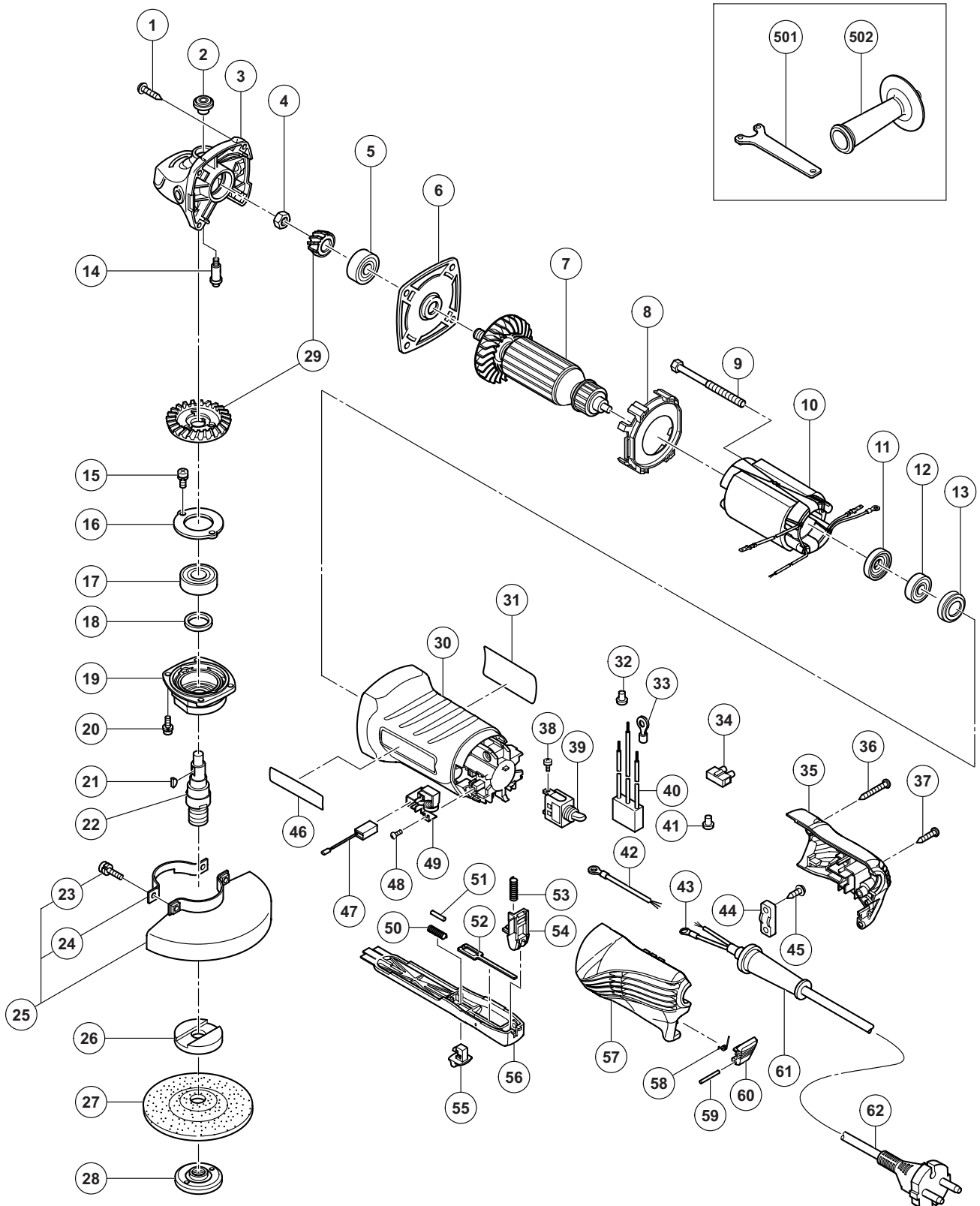


ELECTRIC TOOL PARTS LIST

■ DISC GRINDER
Model G 12SQ

2010·6·24
(E1)



PARTS

G 12SQ

ITEM NO.	CODE NO.	DESCRIPTION	NO. USED	REMARKS
1	307-028	TAPPING SCREW (W/FLANGE) D4 X 25 (BLACK)	4	
2	301-944	PUSHING BUTTON	1	
3	332-529	GEAR COVER ASS'Y	1	INCLUD. 2, 14
4	309-191	SPECIAL NUT M6	1	
5	628-VVC	BALL BEARING 628VVC2PS2-L	1	
6	327-887	BEARING HOLDER	1	
* 7	360-891C	ARMATURE 110V	1	
* 7	360-891B	ARMATURE 127V	1	
* 7	360-891E	ARMATURE 220V	1	
* 7	360-891U	ARMATURE ASS'Y 120V	1	INCLUD. 5, 11, 12
* 7	360-891F	ARMATURE 230V	1	
* 7	360-891G	ARMATURE 240V	1	
8	332-527	FAN GUIDE	1	
9	982-021	HEX. HD. TAPPING SCREW D4 X 70	2	
* 10	340-771A	STATOR 110V-120V	1	
* 10	340-771B	STATOR 110V	1	FOR TPE, GBR (110V)
* 10	340-771C	STATOR 127V	1	
* 10	340-771D	STATOR 220V	1	
* 10	340-771E	STATOR 220V	1	FOR CHN
* 10	340-771H	STATOR 230V-240V	1	
* 10	340-771J	STATOR 230V-240V	1	FOR EUROPE, AUS, NZL, SAF, GBR (230V)
* 10	340-771K	STATOR 230V-240V	1	FOR SIN, MAL, UAE
11	321-722	DUST SEAL	1	
12	626-VVM	BALL BEARING 626VVC2PS2L	1	
13	309-929	RUBBER BUSHING	1	
14	301-943	LOCK PIN	1	
15	987-201	SEAL LOCK SCREW (W/SP. WASHER) M4 X 10	2	
16	316-490	BEARING COVER	1	
17	620-1VV	BALL BEARING 6201VVCMP2L	1	
18	301-946	FELT PACKING	1	
19	316-489	PACKING GLAND	1	
20	987-203	SEAL LOCK SCREW (W/SP. WASHER) M4 X 12	4	
21	302-047	WOODRUFF KEY	1	
* 22	332-536	SPINDLE	1	
* 22	332-537	SPINDLE	1	FOR USA, CAN, MEX
23	308-386	MACHINE SCREW (W/SP. WASHER) M5 X 16 (BLACK)	2	
24	301-949	SET PLATE	1	
25	315-492	WHEEL GUARD ASS'Y	1	INCLUD. 23, 24
* 26	937-817Z	WHEEL WASHER	1	
* 26	319-373	WHEEL WASHER	1	FOR USA, CAN, MEX
27	316-821	D. C. WHEELS 115MM A36Q (25 PCS.)	1	
* 28	994-324	WHEEL NUT M14	1	
* 28	937-923P	WHEEL NUT 5/8"-11UNC	1	FOR USA, CAN, MEX
29	327-888	GEAR SET	1	
30	332-525	HOUSING ASS'Y	1	INCLUDE. 13
31		NAME PLATE	1	
* 32	959-140	CONNECTOR 50091 (10 PCS.)	1	FOR NOISE SUPPRESSOR
* 33	980-063	TERMINAL	1	FOR NOISE SUPPRESSOR
34	938-307	PILLAR TERMINAL	1	
* 35	332-524	TAIL COVER (B)	1	

