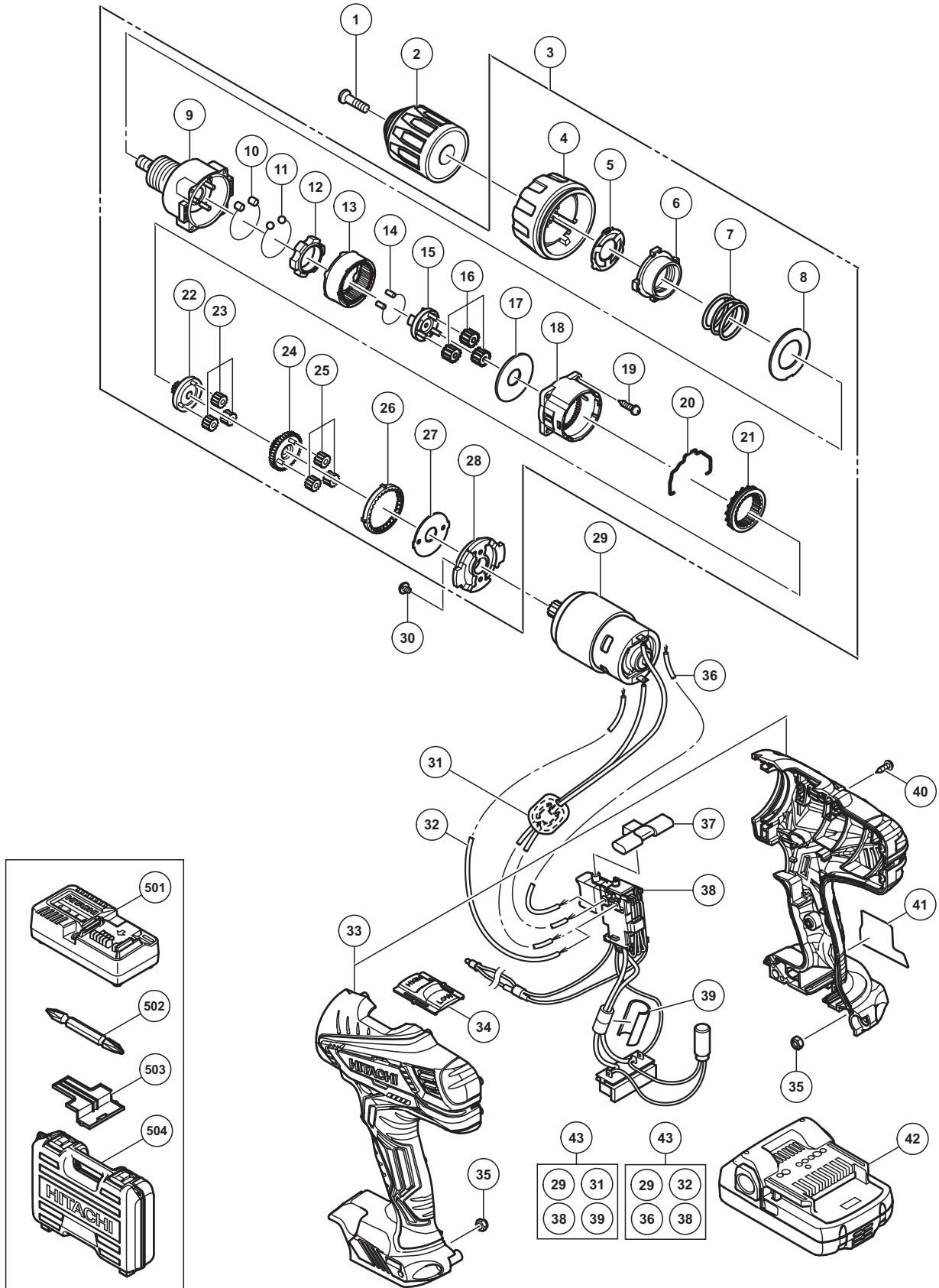


ELECTRIC TOOL PARTS LIST

■ CORDLESS DRIVER DRILL Model DS 18DGL

2014·3·26
(E1)



PARTS

DS 18DGL

ITEM NO.	CODE NO.	DESCRIPTION	NO. USED	REMARKS
1	311959	SPECIAL SCREW (LEFT HAND) M6 X 23	1	
* 2	336859	DRILL CHUCK 13VLRW-N (W/O CHUCK WRENCH)	1	
* 2	336852	DRILL CHUCK 13VLRW-N (W/O CHUCK WRENCH)	1	FOR GBR
* 3	336853	GEAR BOX ASS'Y	1	INCLUD.4-28
* 3	337120	GEAR BOX ASS'Y	1	INCLUD.4-28 FOR GBR
* 4	336854	CLUTCH DIAL	1	
* 4	337130	CLUTCH DIAL	1	FOR GBR
* 5	332741	CLICK SPRING	1	
* 5	337129	CLICK SPRING	1	FOR GBR
* 6	324109	NUT	1	
* 6	337222	NUT	1	FOR GBR
* 7	324110	SPRING	1	
* 7	337124	SPRING	1	FOR GBR
* 8	324347	WASHER (D)	1	
* 8	312714	WASHER (D)	1	FOR GBR
* 9	330802	FRONT CASE	1	
* 9	337121	FRONT CASE	1	FOR GBR
10	330803	ROLLER SET	6	
11	306936	STEEL BALL D5	6	
* 12	330805	LOCK RING	1	
* 12	337125	LOCK RING	1	FOR GBR
* 13	332027	RING GEAR	1	
* 13	312715	RING GEAR	1	FOR GBR
14	330806	NEEDLE ROLLER (A) SET	1	
* 15	330807	CARRIER	1	
* 15	337126	CARRIER	1	FOR GBR
* 16	332028	PLANET GEAR (C) SET (3 PCS.)	3	
* 16	312705	PLANET GEAR (C) SET (3 PCS.)	3	FOR GBR
* 17	324349	WASHER (A)	1	
* 17	312704	WASHER (A)	1	FOR GBR
* 18	324501	REAR CASE	1	
* 18	335959	REAR CASE	1	FOR GBR
19	324357	SCREW SET D3 X 12 (4 PCS.)	4	
* 20	324115	SHIFT ARM	1	
* 20	332017	SHIFT ARM	1	FOR GBR
* 21	332030	SLIDE RING GEAR (B)	1	
* 21	332013	SLIDE RING GEAR	1	FOR GBR
* 22	332029	PINION (C)	1	
* 22	337127	PINION (C)	1	FOR GBR
* 23	332031	PLANET GEAR (B) SET (3 PCS.)	3	
* 23	315816	PLANET GEAR (B) SET (3 PCS.)	3	FOR GBR
* 24	332032	PINION (B)	1	
* 24	337128	PINION (B)	1	FOR GBR
* 25	332034	PLANET GEAR (A) SET (3 PCS.)	3	
* 25	337122	PLANET GEAR (A) SET (3 PCS.)	3	FOR GBR
* 26	332033	FIRST RING GEAR	1	
* 26	332023	FIRST RING GEAR	1	FOR GBR
* 27	324355	WASHER (B)	1	
* 27	312716	WASHER (B)	1	FOR GBR
* 28	332035	MOTOR SPACER	1	

PARTS

DS 18DGL

ITEM NO.	CODE NO.	DESCRIPTION	NO. USED	REMARKS	
*	28 312698	MOTOR SPACER	1	FOR GBR	
	29 337115	MOTOR DC 18V	1		
	30 317333	MACHINE SCREW (W/SP. WASHER) M4 X 6	2		
*	31 334865	INTERNAL WIRE FERRITE SET	1	FOR GBR	
*	32 337117	INTERNAL WIRE	1	FOR USA,CAN	
	33 336851	HOUSING (A).(B) SET	1		
	34 336855	SHIFT KNOB	1		
	35 327002	LOCK NUT M4 (BLACK)	2		
*	36 324499	INTERNAL WIRE (RED) 140L	1	FOR USA,CAN	
	37 336856	PUSHING BUTTON	1		
*	38 336630	SWITCH TERMINAL SET	1		
*	38 336632	SWITCH TERMINAL SET	1	FOR GBR	
*	39 337137	SUPPORT (D)	1	FOR GBR	
	40 313687	TAPPING SCREW (W/FLANGE) D3 X 16 (BLACK)	9		
	41	NAME PLATE	1		
*	42 333353	BATTERY BSL 1815 (USA,CAN)	2	INCLUD.503	
*	42 333352	BATTERY BSL 1815 (EUROPE)	2	INCLUD.503	
*	43 337134	WIRING ASS'Y	1	INCLUD.29,32,36,38	
*	43 337135	WIRING ASS'Y	1	INCLUD.29,31,38,39 FOR GBR	

STANDARD ACCESSORIES

DS 18DGL

ITEM NO.	CODE NO.	DESCRIPTION	NO. USED	REMARKS
501		CHARGER (MODEL UC 18YKSL)	1	
502	983006	+ DRIVER BIT NO.2 65L	1	
503	329897	BATTERY COVER	1	
504	336642	CASE	1	

OPTIONAL ACCESSORIES

ITEM NO.	CODE NO.	DESCRIPTION	NO. USED	REMARKS
601	955657	- DRIVER BIT (A) 3MM X 70L	1	
602	955659	- DRIVER BIT (A) 4MM X 70L	1	
603	955674	- DRIVER BIT (A) 6MM X 70L	1	
604	983004	+ DRIVER BIT NO.1 65L	1	
605	983011	+ DRIVER BIT NO.3 65L	1	
606	337131	HOOK SET	1	
607	306952	STRAP (BLACK)	1	